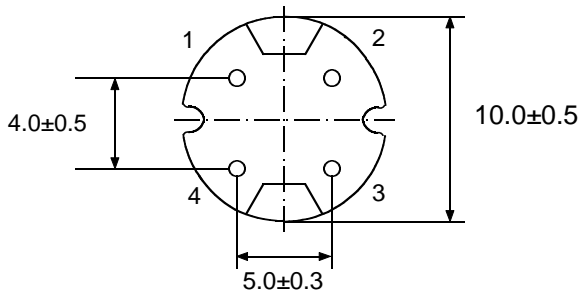
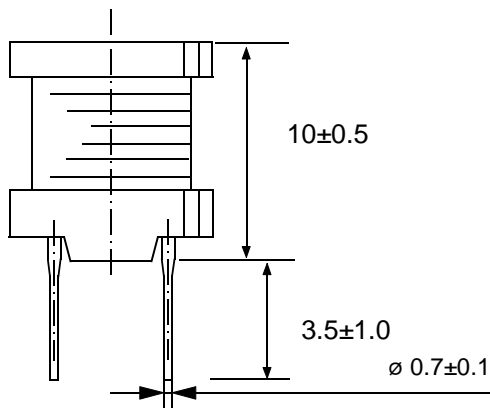
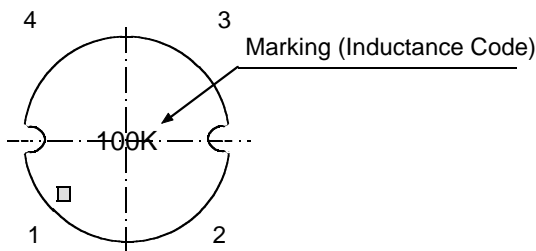


Special Features

- High current capacity
- Ferrite bobbin core
- Low core loss at frequency
- High reliability, efficiency
- Fixed lead spacing
- Operating temperature -25 to +85 °C



Dimension : mm

- ※ Pin (1,4) & (2,3) for 10 ~ 33 μH
Pin 2 & 4 for 39 ~ 1000μH

RL1111 Series

Part Number	L (μH) ±10%	Test Freq.	SRF (MHz) Typ.	DCR (Ω) Max.	Rated Current	
					Idc1 (A)	Idc2 (A)
RL1111-100K	10	1KHz	19.5	0.02	6.0	3.7
RL1111-120K	12	1KHz	17.5	0.025	5.9	3.4
RL1111-150K	15	1KHz	15.6	0.03	5.2	3.1
RL1111-180K	18	1KHz	13.5	0.04	4.6	3.7
RL1111-220K	22	1KHz	11.5	0.042	4.2	3.6
RL1111-270K	27	1KHz	10.6	0.045	3.8	3.4
RL1111-330K	33	1KHz	9.6	0.06	3.4	2.9
RL1111-390K	39	1KHz	8.5	0.07	3.1	2.6
RL1111-470K	47	1KHz	8.1	0.08	2.9	2.5
RL1111-560K	56	1KHz	7.2	0.11	2.6	2.1
RL1111-680K	68	1KHz	6.3	0.13	2.3	2.0
RL1111-820K	82	1KHz	5.8	0.15	2.1	1.8
RL1111-101K	100	1KHz	4.9	0.18	1.8	1.7
RL1111-121K	120	1KHz	4.4	0.23	1.7	1.5
RL1111-151K	150	1KHz	4.1	0.25	1.5	1.4
RL1111-181K	180	1KHz	3.8	0.30	1.4	1.3
RL1111-221K	220	1KHz	3.5	0.35	1.3	1.1
RL1111-271K	270	1KHz	3.3	0.40	1.2	1.0
RL1111-331K	330	1KHz	2.8	0.51	1.0	0.94
RL1111-391K	390	1KHz	2.6	0.60	0.96	0.83
RL1111-471K	470	1KHz	2.4	0.70	0.88	0.75
RL1111-561K	560	1KHz	2.1	0.81	0.8	0.68
RL1111-681K	680	1KHz	1.9	1.0	0.74	0.62
RL1111-821K	820	1KHz	1.8	1.2	0.7	0.57
RL1111-102K	1000	1KHz	1.6	1.4	0.62	0.5

* Idc1: Current to cause maximum 10% of inductance drop

* Idc2: Current to cause 40°C temperature rise

* All specifications are subject to change without notice.